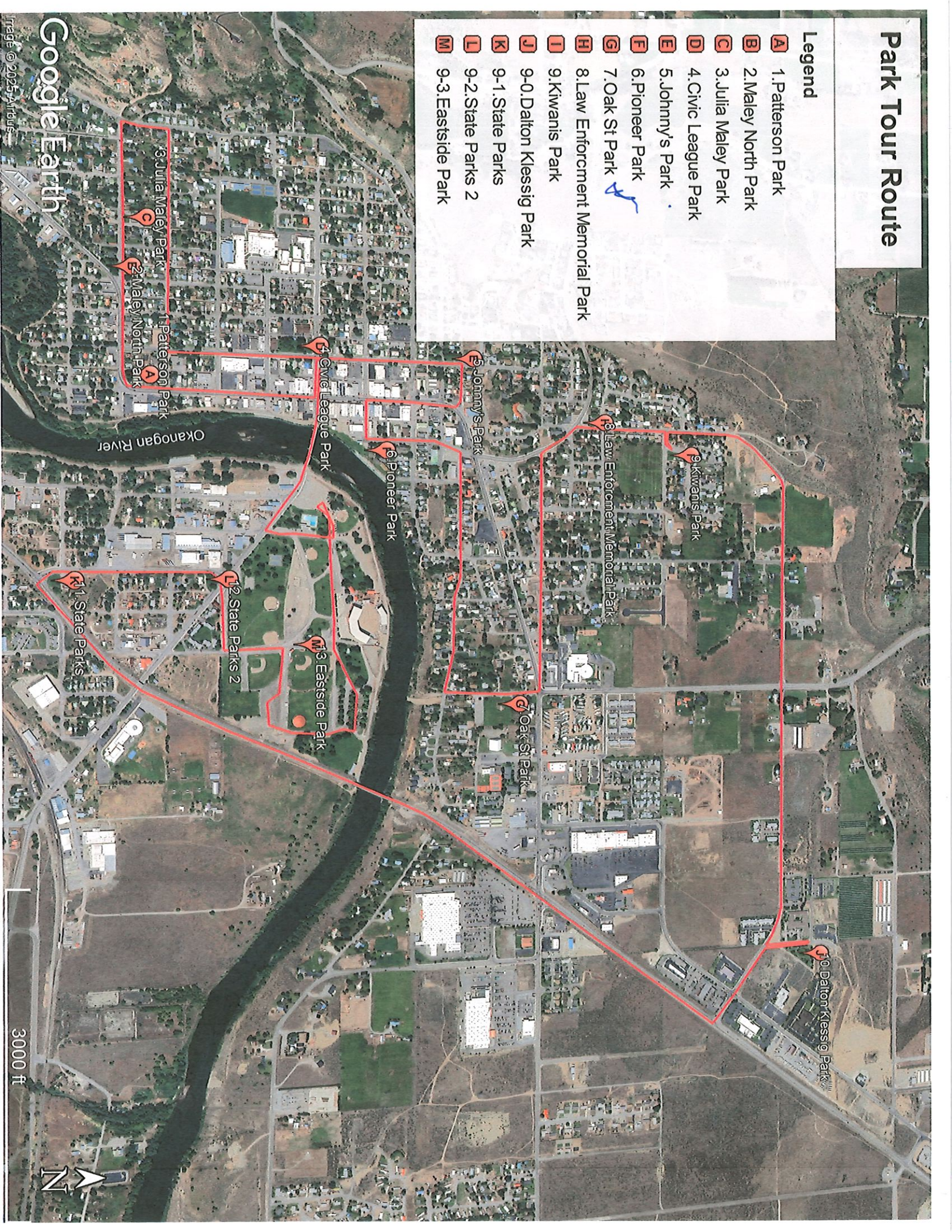


Park Tour Route

Legend

- A** 1. Patterson Park
- B** 2. Maley North Park
- C** 3. Julia Maley Park
- D** 4. Civic League Park
- E** 5. Johnny's Park
- F** 6. Pioneer Park
- G** 7. Oak St Park
- H** 8. Law Enforcement Memorial Park
- I** 9. Kiwanis Park
- J** 9-0. Dalton Klessig Park
- K** 9-1. State Parks
- L** 9-2. State Parks 2
- M** 9-3. Eastside Park



Patterson Park

Previously known as Washington Elm Park, Patterson is a quarter-acre green space located at the corner of south Main Street and Fourth Avenue. The park was originally named for an Elm tree planted in the early 1900's, which was said to have come from a tree grown by George Washington. Unfortunately, the tree was becoming diseased and presented a hazard and thus was removed in the late winter of 1992. The park was subsequently renamed the Patterson Park.

The park, which features several benches, provides a green spot as travelers enter the central business district on Omak's Main Street.

Maley Park

Maley Park was donated to the City by John and Julia Maley and borders their former property. The park is a quarter acre green space with a hardwood tree cover.

Julia Maley Park

Julia Maley Park was also donated by John and Julia Maley. The small neighborhood park has a playground area and green space.

Civic League Park

This is the City's oldest park, a traditional green square, originally developed by early pioneers on land they acquired and donated to the City. Civic League Park is one of the City's most heavily used parks. The City Library was constructed on the southern portion of the site in 1968 and a bandshell was constructed by a citizens' committee in 1989 to celebrate the City's Centennial. A restroom facility was constructed in 1990 by the City of Omak. The park also features playground equipment and is used for many community activities (e.g. Art in the Park, Okanogan County Farmer's Market).

Johnny's Park

Johnny's Park is an approximate quarter-acre green space located at the corner of Ash Street and West Cherry Avenue. This park is a sloped lawn area with shrubs and several shade trees.

Pioneer Park

Pioneer Park is a green space/beautification site bordering the west side of the Okanogan River. Development of this park, which included landscaping and several benches, was spearheaded in the early 1980's by Loretta Nansen, a Civic League member. Benches are provided for those who have a moment to rest and enjoy the river. A small gazebo is located at the north end, which houses plaques memorializing pioneers. The plaques and gazebo, donated by pioneer families, calls our attention to early pioneers.

Oak Street Park

Oak Street Park is a three-acre parcel on Oak Street in the northeastern portion of the City. The park has a ballfield, small concession stand and green space.

Law Enforcement Memorial Park

The Law Enforcement Memorial Park was donated to the City in 2009 as part of the property acquired for the upgrade of Ross Canyon Road. As stipulated by the donor, a memorial was created for law enforcement officers who have lost their lives in the line of duty.

Kiwanis Park

Originally a storm water run off area for the Pan Vista neighborhood Kiwanis Park was developed at the neighborhood's request. Originally named Pan Visata Park it was renamed to Kiwanis Park for their effort in seeding the grass and installing a concrete pad and basketball court. A playground has been installed in 2025.

Dalton-Klessig Park

Dalton Klessig Park was made possible in part by a \$100,000 donation from Elizabeth Klessig Felgenhauer and her family, along with contributions by dozens of other volunteers and contributors. The Omak/Okanogan Tree Board took on the task of raising money for trees and shrubs. Marilyn Fillis began a tradition through the purchase of a concrete bench for the park in memory of two friends. The park now has nine benches and a Gazebo. There is a paved walking path and children's toys.

State Parks

Washington State has three green areas that the City maintains. They are in the right of way for the highway.

Eastside Park

Eastside Park is a 76.6-acre destination park in East Omak. A portion of the property, which lies within the boundaries of the Colville Indian Reservation, was acquired from the U.S. government in 1918. Additional properties were purchased in the mid-forties with another thirty-five acres acquired in 1964. The park includes several Ball fields, Soccer fields, a 68-space full service RV Park, Shelter areas for family events, horseshoe pits, tennis courts, a swimming pool, Dance Pavillion, four restroom facilities, and is home to The World-Famous Omak Stampede.



Joe Robbins Field

Triangle Shelter

Horseshoe Shelter

RV Park

U-7 Soccer Fields

T-Ball Field

Swimming Pool

John Pook Field

Future Pickleball Courts

Ross McCormick Field

U9 Soccer Fields

Tennis Courts

Shirley Bowden Field

Steeple Buchanan Field

Jack Rowe Field

Skate Park

Basketball Courts

U10 Soccer Fields

U10 Soccer Fields

Animal Hospital of Omak

2nd Ave E

2nd Ave

Ferry St

Columbia St

Stampede Dr E

Stampede Dr

Park Dr N

E Side Park

Park Dr E

Ferry St

Omak Eastside Park

97

200 ft

50 m

© 2025 TomTom, © OpenStreetMap, © Vexcel Imaging

Eastside Park

Fields

Joe Robbins Field- Youth Baseball (Majors)

John Pock Field- Youth Baseball (Minors)

Shirley Bowden Field- Softball Youth and High School, Youth baseball practice

Stephie Buchanan Field- Youth Softball, Youth baseball practice

Ross McCormick Field- High Schools Baseball, JV Games, Youth baseball practice and games

Jack Rowe Field- JV baseball practice, Youth baseball practice and games

U7 Soccer- Youth soccer fields

U9 Soccer- Youth Soccer

U10 Soccer- Youth Soccer

CITY OF OMAK PARKS

NAME	ACREAGE	LOCATION	PRIMARY PURPOSE
Paterson Park	0.25	S Main ST	Green Space, Rest Stop
Maley North Park	0.5	301 W 4th	Green Space, Rest Stop
Julia Maley Park	0.25	410 W 4th	Playground Area
Civic Park	1.5	20 S Ash	Playground, Bandshell, Picnic Area
Johnny's Park	0.25	301 N Ash	Green Space, Rest Stop
Pioneer Park	1	River Dike	Green Space, Rest Stop, River Access
Oak Street Park	3	Oak St	Neighborhood Park and Ball Fields
Kiwanis Park	0.25	101 Koala Ave	Neighborhood Park, Playground, Basketball
Law Enforcement Memorial Park	0.15	Irinwood St	Memorial Park for Law Enforcement
Dalton Klessig Park	1	Senna St	Memorial Park, Playground Green Space Gazebo, Walking Path
State Parks	1.25	Dayton ST	Three Green Space , Rest Stop Parks
Eastside Park	76.6	Omak Ave	Destination Park, Sports, Picknick Areas, RV Park, Swimming Pool, Visitor Center, Omak Stampede