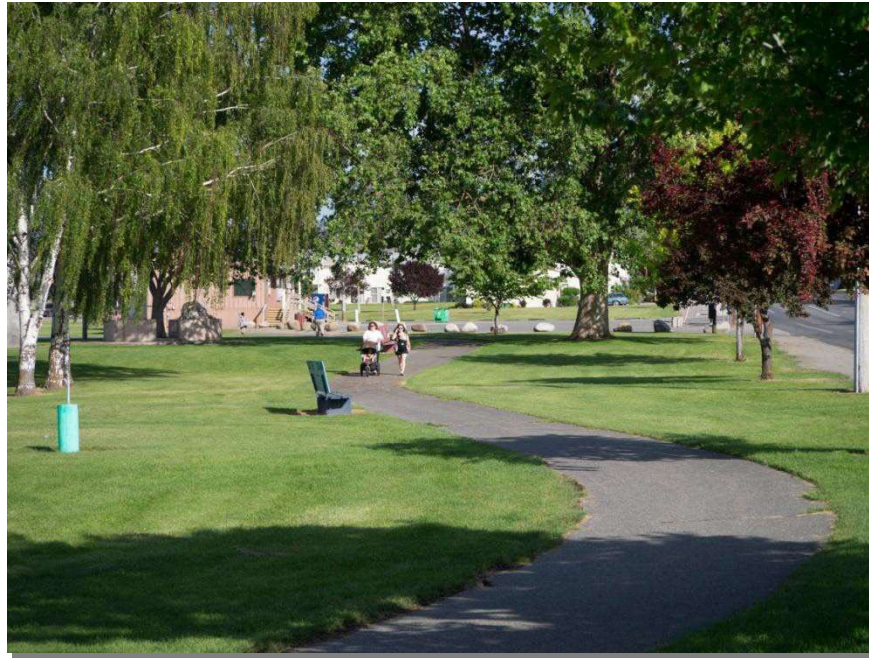


City of Omak



Parks and Recreation Plan

~~April 7, 2020~~ **DRAFT October 2025**

Omak City Council

Cindy Gagne	Mayor
Michael Foth	Position #1
Michelle Gaines	Position #2
Natalie Carriker	Position #3
Dave Womack	Position #4
Barry Freel	Position #5
Steve Clark	Position #6
<u>Maria Lassila</u>	Position #7

Omak Park Board

~~Bob Clark~~ ————— ~~Chair~~
~~Sarah Spence~~
~~Joe LaGrou~~

Vision

Omak's parks provide attractive open spaces and facilities for sports, wellness, and connection with nature, distributed throughout the community for residents and visitors, providing a focus on the river, and encouraging walking and bicycling. The City of Omak will foster community involvement and partnerships that support the operation, improvement, and utilization of its parks.



Community members engage in healthy lifestyles utilizing our local parks.

Summary

In carrying out the Parks and Recreation Plan, the City of Omak (the city) will:

- Continue development of the Eastside Park in partnership with the Omak Stampede Inc, Omak Stampede Indian Encampment and Confederated Tribes of the Colville Reservation (Tribes), guided by the Park's master plan;
- Improve access to and along the Okanogan River which runs through the city;
- Improve use and public benefit from Omak's various small neighborhood parks;
- Strive to make all parks well-tended, family friendly and safe;
- Increase walk-ability and make the city more bike friendly;
- Continue ongoing and encourage partnerships with the Omak School District, sports leagues, and community organizations/service clubs and encourage new partnerships that support operation, safety, maintenance and improvement of the parks;
- Encourage involvement and consider input from City residents, planning area residents and visitors through an engaged and active Park Board;
- Replace recreational facilities at the end of their service life or as needed to improve function and safety as funding allows;
- Pursue funding to tackle the capital improvements identified in this plan.

Table of Contents

Introduction	6
Description of Planning Area	7
Location and Setting	7
Demographics	8
Economics	10
Planning Area Boundaries	11
Goals and Objectives	12
Park and Open Space Inventory	14
Aston Island Open Space	15
Civic League Park	16
Dalton-Klessig Park	17
Eastside Park	17
Ivy Park	19
Johnny’s Park	19
Julia Maley Park	20
Kiwanis Park	20
Koala Parcel	21
Law Enforcement Memorial	21
Maley Park	22
Oak Street Park	22
Okanogan River	23
Omak Pioneer Park	24
Patterson Park	24
River Overlook Open Space	25
Suicide Race Hill	26
Non-City Recreation Facilities	26
Public Involvement	27
Park Board	27
Public Surveys	28
Public Meetings	28
Input Received in Prior Years	29
Demand and Need Analysis	29
Surveys	30
Park Use Levels	32
Open House Meetings and Tour	33
Park Board Recommendations	35
Conclusion	36
Action Plan	36
Current Expense Actions	38
Capital Improvement Program	40
Final Note	41
References	42
City Adoption of Plan	43

List of Figures

Figure 1. Location of Omak within Washington State	7
Figure 2. Location of Omak within Okanogan County	8
Figure 3. Omak Urban Growth Area	11
Figure 4. Service Areas: Omak School District area within Okanogan County	12
Figure 5. Park Locations	15
Figure 6. A side channel of the Okanogan River in the Aston Island Open Space	16
Figure 7. Civic League Park bandshell, restroom and play equipment in background	16
Figure 8. Dalton-Klessig Park	17
Figure 9. Eastside Park campground/RV park and dance pavilion (red roof visible past trees)	18
Figure 10. Eastside Park and Stampede Stadium viewed from Suicide Race Hill	18
Figure 11. Ivy Park	19
Figure 12. Johnny's Park	19
Figure 13. Julia Maley Park scheduled for landscaping, fence and play equipment in 2020	20
Figure 14. Kiwanis Park	20
Figure 15. Koala Parcel, a blank slate awaiting park development, provides expansive views	21
Figure 16. Law Enforcement Memorial honors officers who have lost their lives in the line of duty	21
Figure 17. Maley Park	22
Figure 18. Oak Street Park	22
Figure 19. Okanogan River at downtown Omak viewed from levee	23
Figure 20. Omak Pioneer Park	24
Figure 21. Patterson Park (formerly Washington Elm Park)	24
Figure 22. View from the River Overlook Trail	25
Figure 23. Race starting area	26
Figure 24. Tour group discussion of park priorities at Dalton-Klessig Park, March 14, 2020	29
Figure 25. Some Omak neighborhoods lack green space (imagery: Google Earth)	30
Figure 26. Allocation of general funding expenditures	37
Figure 27. Volunteers pitch in to clean up river levee and shoreline	39

List of Tables

Table 1. City Population Trend Since 1970	9
Table 2. Projected City Populations at .5%, 1% and 2% Annual Growth Rates	9
Table 3. Omak School District Enrollment Data	10
Table 4. Park Inventory Summary	14
Table 5. Number of votes for 1st, 2nd, and 3rd Highest Priorities by 2018-2019 Park Survey Respondents	32
Table 6. Notes from Park Tour, March 14, 2020	34
Table 7. Current Expense Actions by Year	38
Table 8. Capital Improvement Plan - Parks	40

Introduction

Omak is fortunate to have a nice set of parks and open spaces. Some are well-known and offer a variety of recreational facilities, such as the Eastside and Civic League parks. The park system also includes small open spaces which may not be readily recognizable as parks, such as Patterson, Johnny's, and Ivy parks. Two large relatively natural open spaces adjoin the Okanogan River and the river itself provides a recreational corridor through town. Although arterial streets bustle with traffic, quiet side streets offer pleasant walking and bicycling. In addition to the City's parks and rights-of-ways, school district playfields and track are accessible to the public after hours and between events. Portions of a flood control levee along the river are open to the public, providing great opportunities to walk beside and enjoy the river. The City has been engaging additional owners with land underlying the levee to open an additional length of the levee as a riverfront trail.

Washington State Recreation and Conservation Office (RCO) is a major source of funding for recreational facilities within the state. RCO grants have provided significant funding for city park facilities in the past. To maintain funding eligibility, the City must have a comprehensive plan that is approved by the RCO and has been adopted within the past six years.

This Parks and Recreation Plan provides a comprehensive approach to development and management of the city's parks and recreation facilities for the next six years. The Plan will:

- Establish goals and objectives for the city's park system;
- Describe the planning area and provide an inventory of existing city parks, open spaces, and recreation facilities, their condition and capacity;
- Describe public involvement in development of the Plan;
- Analyze demand and need for the city's recreational facilities;
- Provide an action plan and six-year capital improvement program;
- Provide the city resolution [and self-certification checklist](#) approving the plan;
- Qualify the city for Washington Recreation and Conservation Office grant funding.

The Plan builds upon and updates previous plans prepared by [Kurt Danison and Highlands Associates](#) and adopted by the City in 2006, 2010, ~~and 2012~~ [and 2020](#). It considers the results of public input surveys prepared and distributed by the Omak Park Board in 2018 and 2019 as well as direct input from the Park Board, park users and other residents, city staff, civic leaders and the Omak City Planner. [The 2020is update](#) ~~revision~~ was [written prepared](#) by immediate past Park Board member Todd Thorn.

Description of Planning Area

Location and Setting

Omak is situated in North Central Washington along the Okanogan River approximately 45 miles south of the Canadian border and 90 miles north of Wenatchee. The City community is located along the western boundary of the Colville Indian Reservation and extends within a portion of the Reservation. Figure 1 shows the City's location within Washington State.

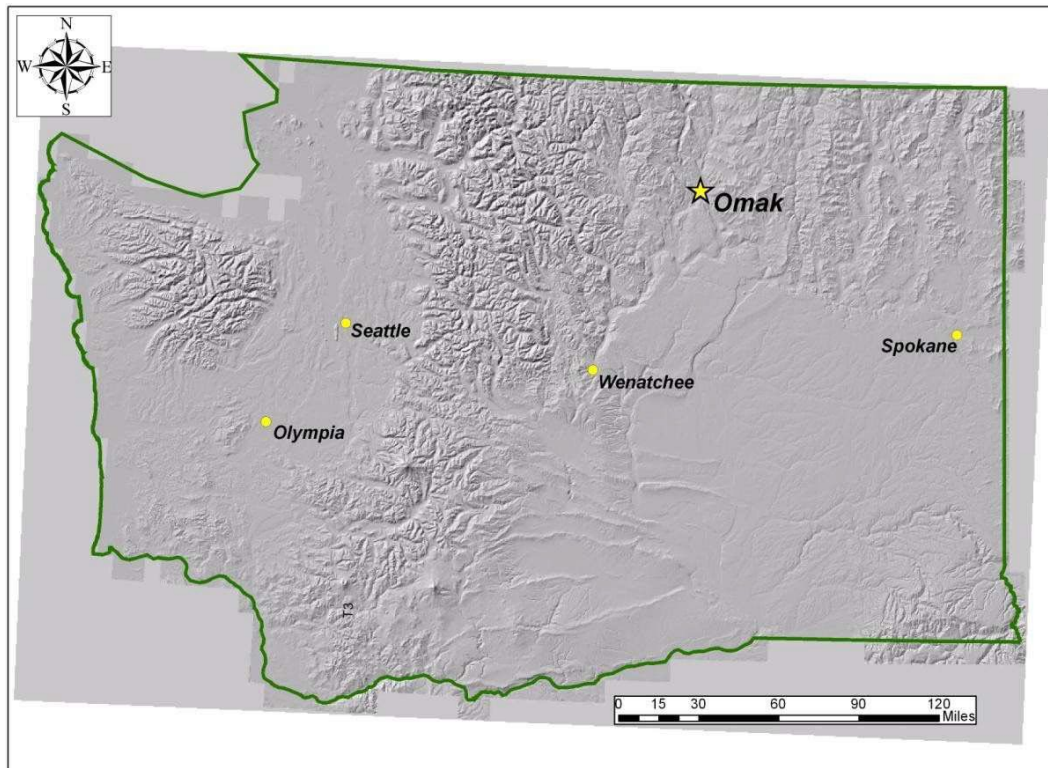


Figure 1. Location of Omak within Washington State.

Omak's location in the Okanogan Valley provides a four-season climate with contrasting hot summer and cold winter seasons. The elevation (825-1,000 feet MSL) and location at the eastern tee-edge of Washington's North Cascades mountains result in abundant dry sunny weather. Annual precipitation is about 13 inches falling mostly as snow.

Three highways, two are designated as National Scenic Byways, come together here, making the City a hub for Okanogan County and the surrounding region. U.S. 97 is a major north/south transportation corridor in Washington, extending from British Columbia to California, and is designated the Okanogan Trails Scenic Byway. The scenic North Cascades Highway (S.R. 20) is the primary route east/west route through the County and provides access from the Methow Valley into Omak and the Central Okanogan Valley. State-Route- 155 is part of the Coulee Corridor Scenic Byway and provides a link from the Okanogan Valley through the Colville Indian Reservation to the Grand Coulee Dam area and Spokane to the east. All three highways are heavily used for commerce and recreational travel. Figure 2 shows Omak's

central location within Okanogan County.

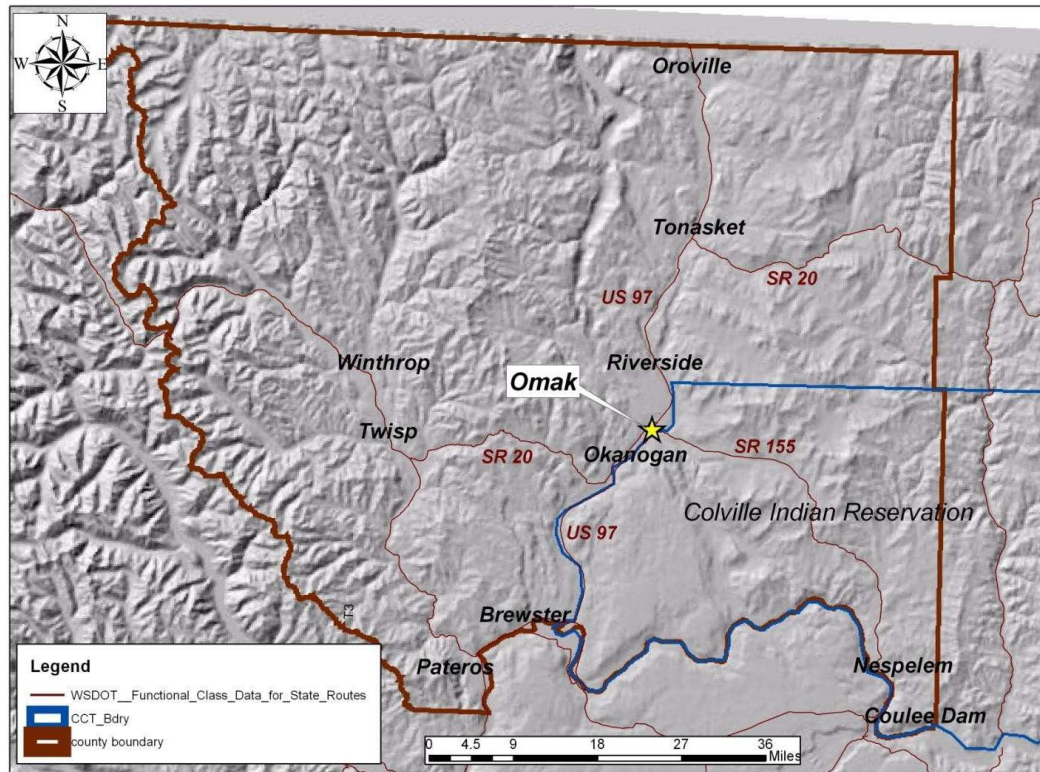


Figure 2. Location of Omak within Okanogan County.

The county seat is located a few miles south of Omak in the City of Okanogan. Many homes on small acreage, farms, ranches, and fruit orchards surround both towns within the valley bottom and wide terraces. The broad Okanogan Valley is bounded by steep hills and mountains [extending to the](#) east and west, which become forested at higher elevations. The Okanogan River drains an expansive watershed extending well north of the international border and over to the crest of Cascades. Considerable public land within the county is managed by the U.S. Forest Service, [Federal Bureau of Land Management](#), Washington Department of Natural Resources, and Department of Fish and Wildlife, all of which allow dispersed recreational use. Recreation within the Colville Reservation is generally limited to tribal members with the exception of specific sites or activities that may be permitted by the Tribe.

Demographics

Omak is the population center of Okanogan County. The April 1, [2018](#) [2024](#) population estimate from the Washington Office of Financial Management indicates a population of [4,985](#) [980](#) within the City of Omak, and a population of [42,490](#) [43,200](#) countywide. An estimated one-half of the County's total population lives within a 40-mile radius of the City.

The City of Omak had a [2010](#) [2020](#) U.S. Census population of [4,845](#) [860](#), almost equally divided between the sexes ([47.57](#) [46.6](#)% male, [52.43](#) [53.60](#)% female). Census data offers general characteristics of the City's population including the following information: [about 25](#) [28.50](#)% of the population was under 18 years of age and [18](#) [17.20](#)% of the population was over 65; the City and surrounding area is a diverse community with [17.5](#) [20](#)% Native American, [and](#) a Hispanic or Latino population of [13](#) [18.9](#)% [and two or more races](#)

18.90%. For 2017-2024 the Census estimated a slight decrease for Omak at 4,787, the percentages of females and those under the age of 18 increasing. The 2017 census estimated 18% of the population to be Native American and 19.6% Hispanic. The April 1, 2018 official population from the Washington State Official of Financial Management was 4,985.

The population of Omak grew steadily from the early 1900’s through the 1970’s, reaching 4,440 in 1975. Population then declined to 4,000 by 1980 and only surpassed that peak by the mid-1990’s. Growth continued up to 2010, declining again slightly through 2017 according to U.S. Census estimates. Table 1 contains historic population data and notes the percent of change by decade from 1970 through 2010, for the five-year period from 2010-2015 and annually from 2015 through 2018. Average annual growth in population from 1990 to 2000 was 1.39%, but since 2000 has slowed to less than 1% per year.

Table 1. City Population Trend Since 1970

Year	Population	% Change
1970	4,164	
1980	4,007	-3.77%
1990	4,117	2.75%
2000	4,721	14.67%
2010	4,845	3.00%
2015	4,784	-1.28%
2016	4,774	-0.21%
2017	4,787	0.27%
2018	4,985	3.79%
<u>2019</u>	<u>4,860</u>	<u>-0.91%</u>
<u>2020</u>	<u>4,870</u>	<u>-1.65%</u>
<u>2021</u>	<u>4,950</u>	<u>0.21%</u>
<u>2022</u>	<u>4,980</u>	<u>1.62%</u>
<u>2023</u>	<u>4,860</u>	<u>-0.60%</u>

For planning purposes, annual growth rates for the City of .05%, 1%, and 2% are projected over five-year increments to 2040-2045. Table 2 shows these projections. Omak’s population history indicates that .05% growth is the slowest rate to be expected over time. The second (1%) and third (2%) rates reflect moderate rates of growth, corresponding with electrical load increases noted by the Public Utility District in recent years. Recent annexations of areas intended for commercial development and new home construction are expected to facilitate increasing growth of the City.

Table 2. Projected City Populations at .5%, 1% and 2% Annual Growth Rates

	<u>2018</u> <u>2024</u>	<u>2020</u> <u>2030</u>	<u>2025</u> <u>2035</u>	<u>2030</u> <u>2040</u>	<u>2035</u> <u>2045</u>
Population at .5% per year	<u>4,985</u> <u>980</u>	<u>5,229</u> <u>5,035</u>	<u>5,490</u> <u>5,136</u>	<u>5,765</u> <u>5,266</u>	<u>6,053</u> <u>5,399</u>
Population increase		<u>249</u> <u>50</u>	<u>261</u> <u>126</u>	<u>275</u> <u>280</u>	<u>288</u> <u>413</u>
Population at 1% per year	<u>4,985</u> <u>980</u>	<u>5,478</u> <u>5,085</u>	<u>6,026</u> <u>5,292</u>	<u>6,628</u> <u>5,562</u>	<u>7,291</u> <u>5,845</u>
Population increase		<u>498</u> <u>100</u>	<u>548</u> <u>254</u>	<u>603</u> <u>573</u>	<u>663</u> <u>854</u>
Population at 2% per year	<u>4,985</u> <u>980</u>	<u>5,976</u> <u>5,186</u>	<u>7,171</u> <u>5,614</u>	<u>8,605</u> <u>6,198</u>	<u>10,327</u> <u>6,843</u>
Population increase		<u>996</u> <u>202</u>	<u>1,195</u> <u>519</u>	<u>1,434</u> <u>1,200</u>	<u>1,721</u> <u>1,832</u>

School district enrollment provides another way to look at the local population. Omak School District enrollment decreased from 2008 through 2014 but has been rising since. Table 3 provides enrollment figures for the District beginning with the 2007/2008 school year.

Table 3. Omak School District Enrollment Data

Year	Total Enrollment	% Change from Previous Year
2007-08	1,805	10.33%
2008-09	1,754	-2.83%
2009-2010	1,702	-2.96%
2010-11	1,509	-11.34%
2011-2012	1,469	-2.65%
2012-2013	1,424	-3.06%
2013-2014	1,403	-1.47%
2014-2015	1,415	0.86%
2015-2016	1,423	0.57%
2016-2017	1,482	4.15%
2017-2018	1,515	2.23%
<u>2018-2019</u>		
<u>2019-2020</u>		
<u>2020-2021</u>		
<u>2021-2022</u>		
<u>2022-2023</u>		
<u>2023-2024</u>		
<u>2024-2025</u>		

City population projections, school district enrollment, and visitor records all point to slow but steady increases in demand for recreational facilities in the future.

Records kept by Omak's Visitor Information Center show a steady increase in the visiting population, attributed to the increasing emphasis on drawing tourism into the area, primarily for scenic and natural resource enjoyment.

City population projections, school district enrollment, and visitor records all point to slow but steady increases in demand for recreational facilities in the future.

Economics

As the largest community in the county central Okanogan Valley, Omak is the central location for retail services and trade, cultural activities, health care, social services and organized recreation. The local economy historically depended on resource industries including orchards, cattle ranching, logging, and wood products manufacturing, but the two Tribal mills in the Omak area have been closed much of the last for over a decade. Increasing acreage devoted to agriculture, primarily tree fruit production, and recent positive markets for cattle have resulted in some stabilization of the economic base. However, tThe local economy is increasingly dependent on tourism, retail sales, and services.

Local cultural and tourism venues that attract visitors include the Omak Stampede, Stampede Museum, Omak Performing Arts Center, and 12 Tribes Casino. The Stampede Arena and Grounds host additional events through the year and the Eastside Park's ball fields, new skate park and swimming pool attract visitors from throughout the service area. Camping is also offered at the park and the City has several hotels and motels. People throughout the county visit Omak to shop at its large retail stores in the northeast part of the City along US 97 and downtown shops and boutiques~~stores. As well, t~~two county and one regional health clinic and the Mid-Valley Hospital are located in Omak, and most other professional services are available.

Funding of the City's parks and recreation facilities and programs comes from the City's general fund, which is dependent upon donations and sales, utilityies, and property taxes. Park maintenance and smaller improvements are supported by the general fund, also referred to as current expense. Major capital improvements rely upon donations and grant funding.

Planning Area Boundaries

Omak Park planning must address the needs of people who live in Omak or who visit either for recreational pursuits or for business and commerce. The Planning Area consists of the lands within the incorporated boundaries and Urban Growth Area (UGA) of the City of Omak (Figure 3). However, this plan strives to meet the needs of a service area and tourist population that is significantly larger than that found within the boundaries of the planning area.

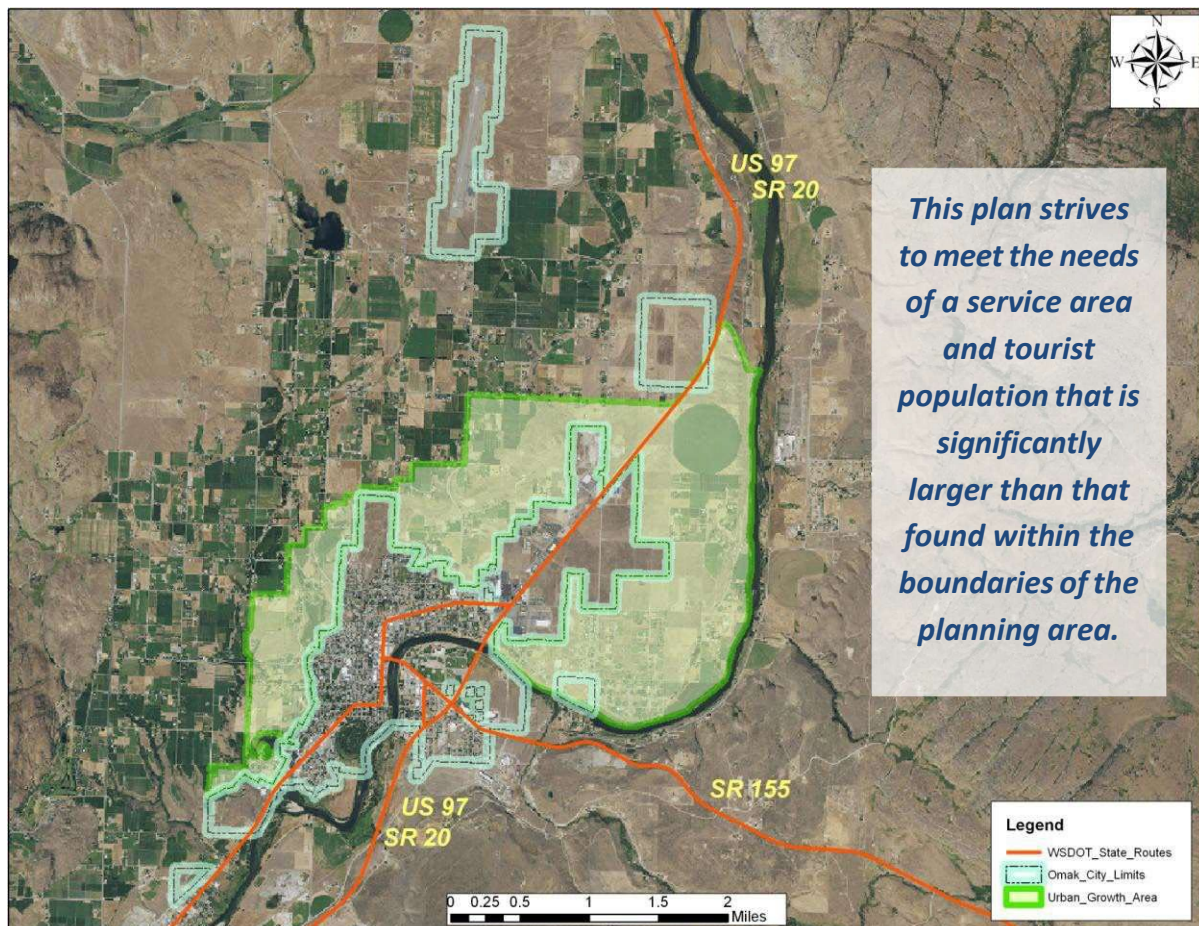


Figure 3. Omak Urban Growth Area.

The Omak School District, which includes the primary user population for Omak parks, encompasses approximately 370 square miles and constitutes the principal service area for the City's park system. The service area can also be considered to encompass Okanogan County and much of north central Washington. Figure 4 shows the extent of the service area. Residents from the nearby communities of Okanogan, Riverside, and Conconully depend on the recreational opportunities available in Omak. Events including, but not limited to, athletic and equestrian competitions, the Omak Stampede, World Famous Suicide Race and Indian Encampment, [Arts in the Park](#), the Omak Farmers Market, and myriad community events draw people from throughout the county, region, and beyond to Omak's parks. Records from the Visitor's Center in the Eastside Park indicate that visitors from around the world make use of Omak Park facilities.

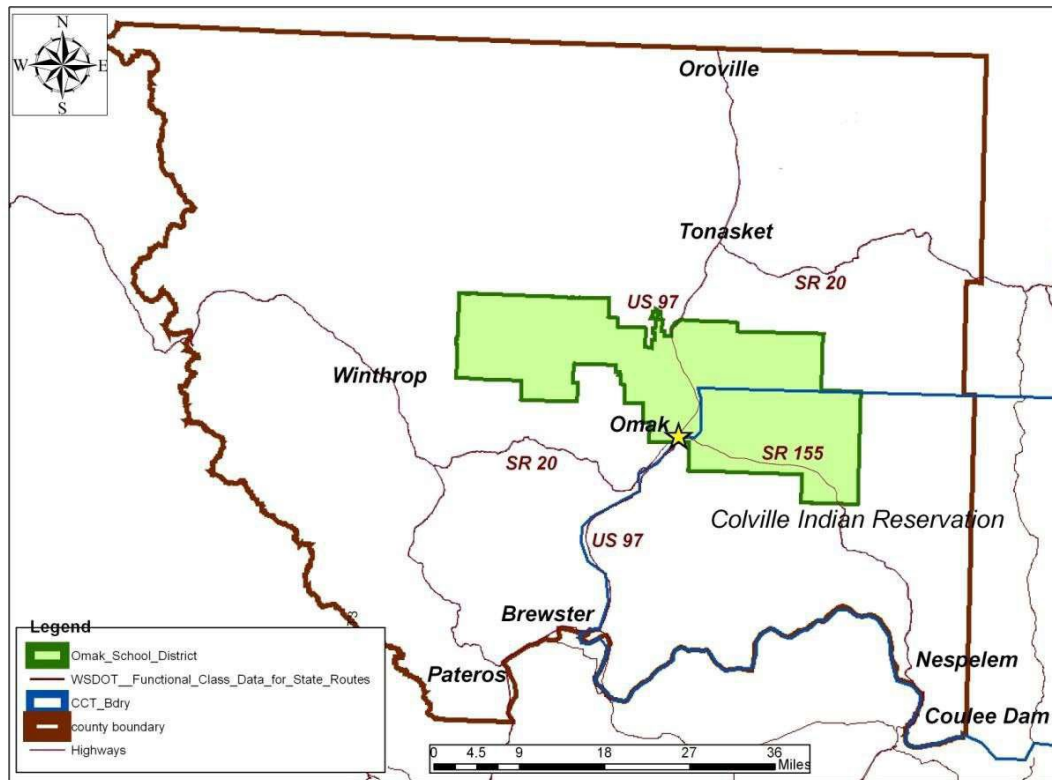


Figure 4. Service Areas: Omak School District area within Okanogan County.

Goals and Objectives

Omak has long recognized that parks and recreation make a substantial contribution to the "quality of life" for Omak area residents. At the same time, resources available to support recreation are limited, so the City must prioritize among many possible alternatives and desires. Well-defined parks and recreation goals and objectives are intended to guide the City's decisions in addressing residents' most important recreational needs.

Goals are broad statements of intent or ambition. Objectives provide more specific measurable targets to aid in achieving goals. The goals and objectives in this plan align with the City's Comprehensive Plan Community Facilities Element ([20052024](#)).

Goal 1: Provide recreational opportunities for all ages and for the diverse population of the community and its visitors.

Objectives:

- [Recruit](#) [Maintain](#) Park Board membership representing the age and cultural diversity of the Planning Area.
- Strengthen involvement, coordination, and support from the Tribes and tribal membership, particularly regarding the Eastside Park.
- Assess and balance the provision of facilities that invite participation from the full range of ages and abilities.

Goal 2: Maintain and improve parks facilities to provide positive recreational experiences for residents and visitors.

Objectives:

- Maintain park recreational facilities and open space in excellent a condition appropriate for its use.
- Upgrade or replace facilities at end of service life or when appropriate, to improve public benefits or reduce maintenance and operational costs.
- ~~Carry out~~ Follow through on the an assessment of the swimming pool condition to develop a plan and schedule for its replacement.

Goal 3: Encourage involvement by residents and partnerships with other organizations in the development and management of parks.

Objectives:

- Coordinate with the Tribes, Omak School District, other public agencies, and other entities in planning for parks and recreational facilities and management of open spaces.
- Encourage and foster partnerships to maintain and improve Omak's neighborhood parks.
- Recruit and support an active, ambitious Park Board to assist in public outreach and advise the city regarding implementation of this plan.

Goal 4: Balance provision of facilities for organized sports and events with neighborhood parks and trails.

Objectives:

- Improve linkage between parks with pedestrian and bicycle-friendly pathways.
- Install signage or other identifying markers for each park and open space, welcoming use, and stating park rules appropriate to each park's setting.
- Continue redevelopment of the Eastside Park, guided by its master plan and continued evaluation of community and Tribes recreational needs.

Goal 5: Increase water access to and enjoyment of the Okanogan River.

Objectives:

- Provide/improve trails that utilize the River Overlook and Aston Island open space areas.
- Increase the length of flood control levee accessible to public trail use.
- Develop additional access points to the Okanogan River that balance human use with ecosystem function.

Goal 6: Broaden and increase sources of funding for recreational features and programs.

Objectives:

- Encourage and honor contributions by volunteers, local organizations, businesses, and Tribes.
- Search for and connect with grant agencies and foundations with goals matching the City's recreational goals and objectives.
- Evaluate formation of a parks and recreation district to build additional capacity supporting recreation within the Planning Area.

Park and Open Space Inventory

The Omak park system includes 16 different parks and open spaces, ranging in size from .15 acres to over 76 acres. Total acreage for the system is about 125 acres. The system is diverse, from the Eastside Park with its Stampede stadium, ball fields ([baseball, softball, t-ball and soccer](#)), [skatepark, tennis courts](#) and campground, to compact neighborhood or pocket parks, small green spaces and expansive, relatively natural open spaces. The Okanogan River also merits consideration as an open space within the city. Features, condition, and needs of each park and open space are described in this section and summarized in Table 4. Figure 5 provides an overview of park locations.

Table 4. Park Inventory Summary.

Park/Open Space Name	Acreage	Primary Purpose
Aston Island open space	19.00	River front; forested floodplain, wildlife and nature observation, informal trail
Civic League Park	1.50	At City center; lawn, band shell, playground equipment, restroom facilities, picnic tables, events
Dalton-Klessig Park	1.00	Neighborhood park; lawn, walking trail, memorial trees/benches, rest area, play equipment
Eastside Park	76.60	Destination park; 8,000 seat rodeo arena, swimming pool, baseball and soccer fields, Native American dance pavilion, camping with RV hookups, exercise and river levee trails, basketball and tennis and pickle ball courts, paved trail , picnic areas, skatepark, visitors center and Stampede museum and veterans memorial
Ivy Park (open space)	.25	Green Open space; lawn hardscaped stormwater retention/snow storage
Johnny's Park (open space)	.25	Green Open space; lawn/ landscaping
Julia Maley Park	.15	Neighborhood park with fenced playground
Kiwanis Park	.25	Neighborhood park; children's ball field and basketball court and playground
Koala Parcel (open space)	.35	Reserved for future park development
Law Enforcement Memorial	.15	Green Open space/stormwater retention area; hardscaped, law enforcement memorial
Maley Park (open Space)	.50	Green Open space; lawn, shade trees
Oak Street Park	3.00	Neighborhood park; ball fields and concession stand
Okanogan River		Water body of Statewide Significance; 2.7 miles of river lie within or is bounded city limits
Omak Pioneer Park	1.00	Neighborhood park on river levee; river overlook with benches and gazebo
Patterson Park (open space)	.25	OpenGreen space; lawn, bench
River Overlook (open space)	28	Covered landfill with shrub steppe vegetation; river front (overlook only at this time), primitive walking trail
Suicide Race Hill (open space)	.58	Site of start and hill for World Famous Suicide Race

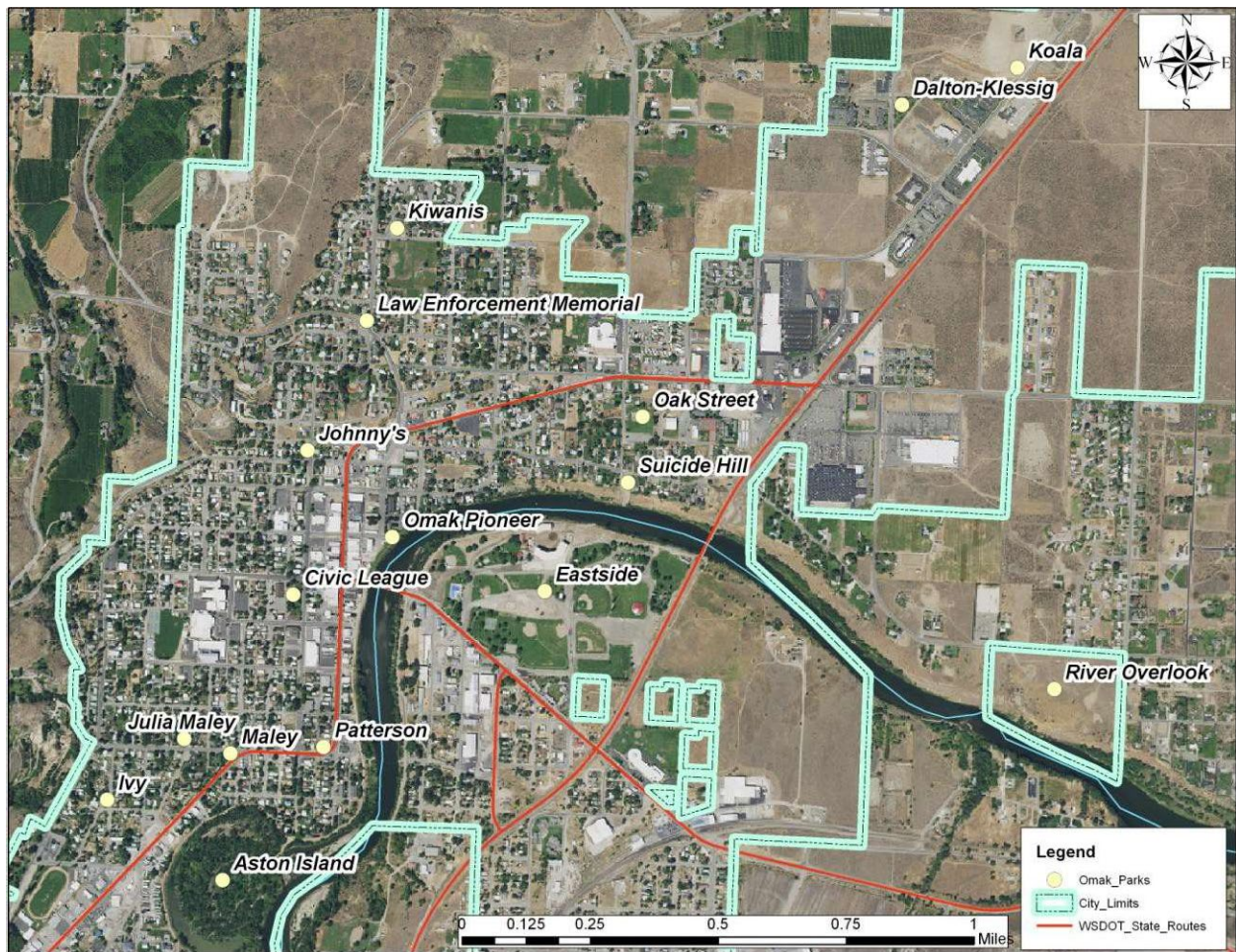


Figure 5. Park and Open Space Locations.

Aston Island Open Space

Aston Island is a forested riverfront floodplain area, lying within a former meander bend of the Okanogan River. It is bounded by the river and flood control levee. The City maintains driving access for mosquito control, a sewer line, and law enforcement. The area is otherwise undeveloped. It is accessible for walking and provides access to the river shoreline. Challenges to recreational use include regular flooding, considerable poison ivy, homeless use, and limited parking at the access point crossing the levee. Nonetheless, Aston Island has great potential for improved river access, nature appreciation, trails, and as an outdoor classroom.



Figure 6. A side channel of the Okanogan River in the Aston Island Open Space.

Civic League Park

Civic League Park may be the heart of Omak, located a block off Main Street and the central business district. The Omak Library occupies a portion of the property. The park is a frequent gathering place, hosting events such as the Halloween Harvest Festival Park, [Art in the Park](#), and performances set [on in](#) the band shell. It provides a spacious lawn well shaded by mature trees, with picnic tables, playground equipment, band shell, and rest room. [Recently the park has become an attraction for homeless people which results in trash, open drug use and other behaviors that have caused many in the community to complain and limit their use of the library and park.](#)

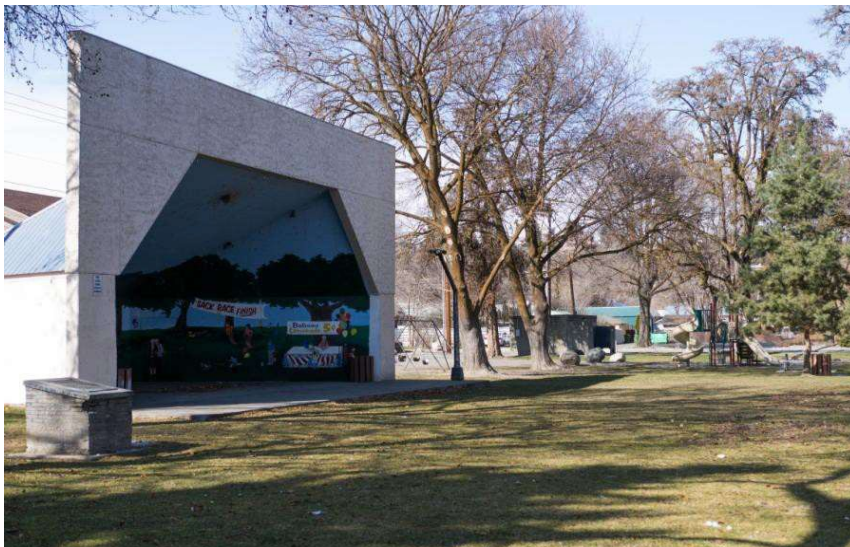


Figure 7. Civic League Park bandshell, restroom and play equipment in background.

Dalton-Klessig Park

Elizabeth Felgenhauer donated ~~this~~ the funding for this park to the City in memory of her parents and grandparents. It is located close by several health clinics and ~~an~~ two assisted living facilities in north Omak. The park is landscaped with lawn and a variety of young trees. It offers a paved walking path, gazebo, benches, and play equipment, and is intended to serve as a peaceful outdoor space.



Figure 8. Dalton-Klessig Park.

Eastside Park

Eastside Park is a large destination park, drawing visitors from around the world for the Omak Stampede each August, and people from throughout the greater service area who utilize its various facilities throughout the year. Both activities and facilities within the park have been developed and are managed in partnership with the Omak Stampede Inc. Rodeo and Native American Center Association (ORNAC) and the Confederated Tribes of the Colville Reservation. The park is located within the City, east of the river within the bounds of ~~an~~ the Colville Indian Reservation. The Stampede originated and has a long history and popularity with Tribal members, as well as participation by Native American riders. A Tribal encampment and pow wow occurs during the Stampede and a dance pavilion, built by the Tribe in 2010, provides a space for ~~their~~ dancing and other activities.

Along with the 7,500 seat arena, the park is home to a seasonal swimming pool, seven baseball fields, four soccer fields, four tennis courts, two basketball courts, two pickleball courts, playground equipment, in ground skate park, a 68- space full service RV park, two picnic shelters and cooking areas, three restroom facilities, a fitness trail, a small dog park, the Buell Stevens Veterans Memorial Garden, Tourist Information Center, and Stampede Museum. The park is located adjacent the Okanogan River, enabling riverfront walking and access on .6 miles of river levee.

Given its size, scope of facilities, and cooperative development and management, the park has a master plan initially adopted in 1997 with revisions in 2005 and 2009. The master plan has provided a comprehensive list of park development and redevelopment projects. Completed projects include construction of a new arena, dance pavilion, skate park, dog park, and relocation of soccer fields. Remaining priorities include ~~construction of an improved skate park~~, a baseball quadplex, repair or replacement of the swimming pool, improvement of the levee trail, parking, tree planting, relocation of the Veterans Memorial Garden, and improvement of the arena concourse and Native American encampment facilities. A number of these projects are identified in this plan's six-year capital improvement plan.

The park's location along the river and length of shoreline on the inside of a river bend provide significant potential for improved river access, a goal of this plan.



Figure 9. Eastside Park campground/RV park and dance pavilion (red roof visible past trees).



Figure 10. Eastside Park and Stampede Stadium viewed from Suicide Race Hill.

Ivy Park – Open Space

Ivy Park provides a small xeriscaped area in the triangle bordered by Ivy and Granite Streets and 5th Avenue in south Omak.



Figure 11. Ivy Park.

Johnny’s Park – Open Space

Johnny’s Park consists of a sloping lawn with shrubs and several shade trees. It is located at the corner of Ash Street and West Cherry Avenue and is crossed by a private driveway. The park is not identified by a sign or other park feature.



Figure 12. Johnny’s Park.

Julia Maley Park

Julia Maley Park is a neighborhood park donated to the City by John and Julia Maley. The park had offered shade trees, picnic facilities, and playground equipment, but a portion of the space ~~was recently~~ has been developed ~~utilized for development of~~ with a city well and protective enclosure. A mural painted in 2005 by local children and adults on the east retaining wall of an adjacent alley faces the park. The City ~~plans to~~ install ~~ed~~ new play equipment and landscaping in the e ~~the~~ remaining park area bordering 4th Avenue during 2024 with new fencing for the playground are planned for 2026.



Figure 13. Julia Maley Park ~~scheduled for~~ landscaping, fence and play equipment in ~~2020~~ 2025.

Kiwanis Park

Kiwanis Park provides a small playfield for neighborhood children with a diamond for T-ball. It was originally reserved to capture stormwater runoff anticipated from local development. The Kiwanis Club initially seeded and fenced the playfield and later installed a cement pad for a small basketball court. There are currently no plans for additional improvements with new ~~, although~~ play equipment and picnic tables have been suggested over the years installed in 2025.



Figure 14. Kiwanis Park play equipment 2025.

Koala Parcel – Open

This .35-acre parcel was acquired with the Dalton-Klessig Park parcel, and though currently undeveloped, has been reserved for a park. It is located along Koala Avenue in north Omak near several health clinics. Consideration has been given to a trail connecting the parcel to the nearby Dalton-Klessig Park.



Figure 15. Koala Parcel, a blank slate awaiting park development, provides expansive views.

Law Enforcement Memorial

The Law Enforcement Memorial occupies a small area at the intersection of Ironwood Street and Ross Canyon Road. The parcel was donated in 2009 as part of the property acquired for the upgrade of Ross Canyon Road. As stipulated by the donor, a memorial was created for law enforcement officers who have lost their lives in the line of duty. The site is covered with stone and gravel to minimize maintenance and provides storm water retention.



Figure 16. Law Enforcement Memorial honors officers who have lost their lives in the line of duty.

Maley Park – Open Space

Like the Julia Maley Park down the street, Maley Park was donated by John and Julia Maley. The park is located beside their former home at the intersection of 4th Avenue and Okoma Drive. Its lawn is shaded by several mature hardwood trees. The park is not identified by a sign or other park feature.

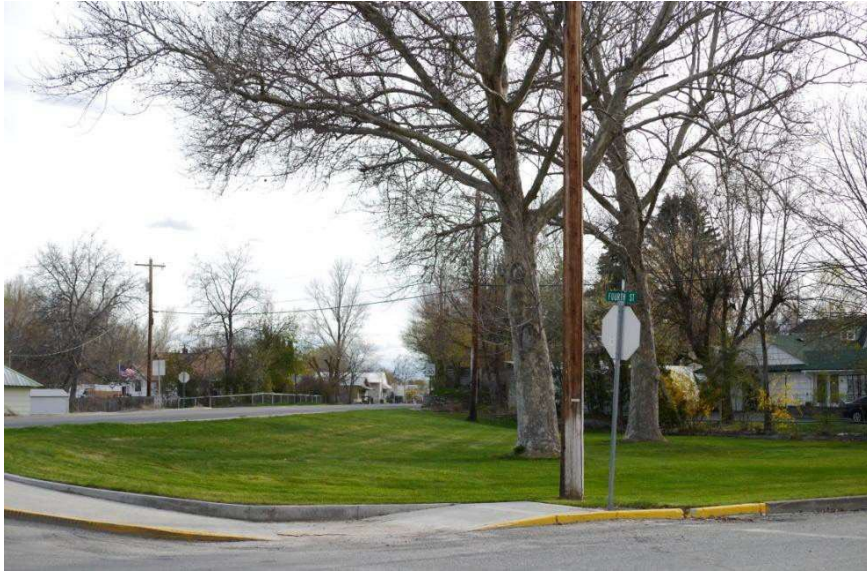


Figure 17. Maley Park.

Oak Street Park

Oak Street Park is located on Oak Street between Riverside Drive and Dewberry Avenue. Three acres in size, the park includes two softball fields, picnic tables, and a concession stand. Trees have been planted to provide future shade. Permanent restrooms have been identified as a needed improvement for the park.



Figure 18. Oak Street Park.

Okanogan River

The Okanogan River is neither owned nor maintained by the city, but must be recognized as a natural open space having exceptional recreational value for residents and visitors. Boating, floating, and fishing all occur on the river. Walking, birding, and nature appreciation occur along its shoreline.

Portions of the City's river levee constructed following extensive flooding in 1972 are open to public use, such as the levee in the Eastside Park. Over the past decade or so trail enthusiasts have worked to convince the City to pursue opening the levee on the downtown side of the river to the public, from Central Avenue to Ash Street, requiring easement amendments from underlying landowners. To date, most but not all of the landowners have granted permission. Yet another segment of levee continues south to the radio station, bordering the oxbow slough along Aston Island. Potential exists for the City to offer an attractive and popular river walk the length of the levee through town.

Increasing river access is also identified as a need and objective of this plan. Specific plans have not yet been developed, but may include walk-in or vehicular boat and float put-in and take out sites, viewing platforms or benches, improved fishing access and interpretive signs. Ideally a launch facility could be sited near the upstream end of town with a take-out site near the downstream end to support summertime floating and non-motorized boating activity. Several parks and open spaces owned by the City should be assessed for this purpose as well as other well-suited sites that might be acquired.

The Omak-Okanogan Rotary Club has expressed the willingness to work with both communities on development of new and/or improvement of existing river accesses as a means to stimulate river recreation.



Figure 19. Okanogan River at downtown Omak viewed from levee.

Omak Pioneer Park

Omak Pioneer Park is a downtown pocket park, located where Apple Avenue ends at the river. Several benches and a gazebo are set on the levee allowing viewing of the river. The gazebo has plaques memorializing Omak pioneers, donated by their families. Loretta Nansen, a Civic League member, spearheaded development of this park in the early 1980's. [The Park saw some improvements in 2025 when volunteers painted and did maintenance on the structure.](#)



Figure 20. Omak Pioneer Park.

Patterson Park – Open Space

Originally the park was named for an elm tree planted in the early 1900's, said to have come from a tree grown by George Washington. The tree was removed in 1992 due to disease and the park was subsequently renamed Patterson Park. Located at the corner of south Main Street and Fourth Avenue, the park provides a small lawn and bench for passersby. Like Ivy and Johnny's Parks, Patterson Park is considered a candidate for hardscaping.



Figure 21. Patterson Park (formerly Washington Elm Park).

River Overlook Open Space

The River Overlook Open Space is a city property located along the Omak River Road, east of US 97 on the north shore of the Okanogan River. Prior to the early 1970's, the City's landfill occupied a portion of this property. The landfill was covered with soil and the land has sat idle since. Vegetation is a mix of native shrub steppe and introduced species of grass, forbs, and shrubs. Aspect is south-facing with gentle slopes throughout the northern half and moderately steep slopes breaking to the river. The property includes about 1,500 feet of river shoreline.

In 2015, the local Paths and River Ways group suggested development of a loop trail on the site, affording expansive views of the river and landscape surrounding town. Following Council approval, the group and City held a cleanup event along the pathway and trail development began. The trail is mowed occasionally and is about .8 miles in length. In 2020, the City [will](#) [install](#) several parking spaces and a trailhead sign.

With an area of about 28 acres, the property offers potential for additional recreational improvements. With careful design, river access might be provided at its southeast corner where hillslopes are less steep and the river current is slower. The property should be included in a City-wide river access and trail plan given its shoreline and potential for river access.



Figure 22. View from the River Overlook Trail.

Suicide Race Hill

Suicide Race Hill is located on Dewberry Avenue. This park serves as the starting area and hill for the World Famous Suicide Race. The level start area is fenced and lighted. Most maintenance on the property is performed by Suicide Race Owners and Jockeys prior to each year's event. Use for the race is of short duration and the park otherwise is little used, yet offers great views of the river, Eastside Park, and most of Omak from the crest of the hill. There are no plans for improvements. One idea has been to install a zip-line from the top of the hill to Eastside Park as a potential attraction.



Figure 23. Race starting area.

Non-City Recreation Facilities

The Omak School District also owns substantial property within the City; however, recreation facilities owned and maintained by the school are limited to playgrounds at the two elementary schools, indoor gymnasiums at the high school, middle school and elementary schools, a football/track practice complex in the southern end of the City, and the formal football field and four tennis courts located adjacent to the high school. The school utilizes City-owned and operated ball fields, soccer fields, and tennis courts located at Eastside Park.

In addition to traditional sports related facilities, the School District also operates and maintains the Omak Performing Arts Center, a 550-seat auditorium that hosts a wide array of community and cultural events. The District has also acquired 120 acres east of US 97 bordering Sandflat Road for initially a new middle school and eventually a new campus with accessory sports and recreation facilities.

Private facilities in the area include the Okanogan Valley nine-hole golf course on the flats west of Omak, Valley Lanes (bowling facility) and the North Cascades Athletic Club, which includes two racquetball courts, three outdoor tennis courts four indoor tennis courts, a weight room, exercise equipment and a half-court basketball court.

Immediately south of Omak, the City of Okanogan maintains its own system of parks, which includes the Central Valley Sports Complex, a swimming pool, several picnic facilities, playground equipment, boat launch, RV parking, and green spaces.

Additionally, the Tribes owns and maintains a Community Center just outside the eastern City limits and ~~has plans to~~ develop~~ing~~ a health center at the former veneer mill log yard along SR 155. The Community Center includes a basketball court, weight room and various indoor recreational areas. The Tribes also have a park, Nicholson Beach, with a beach and boat launch on Omak Lake approximately six miles from Omak where non-tribal use is allowed with a Tribal permit.

Within a thirty-minute drive of the City, recreational opportunities abound on lands managed by the State Department of Natural Resources, U.S. Forest Service, State Parks and the Department of Fish & Wildlife. These government agencies maintain a variety of recreational facilities, including campgrounds, boat launches on the Okanogan River and several area lakes, hiking, biking and horseback riding trails, opportunities for wildlife viewing, and driving for pleasure. During winter months, there are opportunities for cross-country skiing and snowmobiling on both groomed and ungroomed trails accessed from SR 20 ~~tate and volunteer~~ and maintained with Sno-Parks funding. The Loup Loup Ski Bowl, approximately 20 miles from Omak, offers a variety of terrain for cross-country and alpine skiers, snowshoeing, snowboarding, tubing, ~~and~~ skijoring (skiing with your dog!) and newly developed mountain bike and equestrian trails. There is also the privately owned Gamble Sands Golf development which features two wildly popular 18-hole courses, clubhouse and restaurant and a growing number of lodging units.

Public Involvement

The City has used a variety of means to gather input from residents within the Planning Area. These include parks surveys, Omak Park Board meetings, City Council updates and public hearing and comments received by City staff, Mayor, and Council members.

Park Board

A primary mechanism for recreation input to the City is the Park Board. The Park Board has five positions. Board members serve three-year terms. The role of the Board is to collect input from community members and advise the City and Council. Meetings are scheduled monthly. ~~Two Board members left in late 2019~~ A new Park Board was established in April 2025 and the City is taking this opportunity to update the 2020 plan in order to maintain eligibility for Recreation Conservation Office funding. ~~revise the Park and Park Board city codes, after which new Board members will be chosen and functions resumed.~~

During the last significant update to the plan in 2020, 14 Board meetings occurred with a quorum of members. Typically, the City Public Works Director or City Administrator and a Council member attend these meetings. Several additional informal meetings took place when the required quorum did not attend. Park Board discussion and recommendations covered multiple park topics during this two-year run-up to the park plan revision. Topics and recommendations involved trail development on portions of the levee and at the Old Landfill site, selection of the skate park designer, relocation of the Eastside Park veteran memorial, repairs of tennis court cracks, Eastside Park improvement needs, park funding and grant development,

commercial business use in parks, swimming pool assessment and replacement process, and other items. The Board heard from user groups regarding need for more and better hockey, pickleball, and skate park facilities. Large and small park needs were recorded in the minutes of meetings. The newly reconstituted Park Board who have been meeting since late spring, decided that the plan primarily needed review and refinement.

Public Survey

The park plan revision process began in May of 2025. Staff and the contract planner provided the Board with a brief review the existing (2020) plan and identified the process for updating the plan. The Board recognized the need for a survey directed staff to prepare a draft based on the last parks survey. The Board approved the survey in July, with the City working on its distribution in August and September of 2025. The survey, conducted using Survey Monkey, was announced in the monthly newsletter sent to all households in the City, Facebook posts contained a QR code with a link to the survey, and the City's website contained a link 40 responses were received and tabulated by the city's planning consultant. Survey responses identified strong support for trails, swimming pool, play equipment, more benches, and interest in roller or ice-skating facilities, to be discussed further in the Demand and Need Analysis section of the plan.

Public Meetings

It is important to recognize that Park Board meetings are regularly scheduled and posted public meetings where guests are welcomed and heard. The Park Board and its meetings provide one of the primary conduits of input from Planning Area residents to the City.

In addition to the regular Park Board meetings, the City hosted several open house style public meetings focused on safety, crime, homeless and related issues that also provide community input on recreation use and facilities in recent years.

In 2016, the Paths and River Ways group conducted a survey canvassing landowners beside the river levee from Central Avenue to Ash Street. Landowners were asked whether they support a trail on the levee and about their concerns. The survey revealed that most owners of land beside and underlying the levee approved of its use as a non-motorized trail. Because many people walk the levee despite signs posting its closure, some owners felt resigned to its use and recognized that trail designation and management would be an improvement. Several owners were opposed to a trail due primarily privacy or security concerns. Results from this survey led to the City conducting an open house on a levee trail, described in the next section. The results will also be examined further in the Demand and Need Analysis section of the plan.

The Paths and River Ways group presented results of the levee landowner survey to the Park Board, which recommended the City pursue trail creation on the levee. Subsequently, the City sent letters to each of the landowners, inviting them to a public open house regarding the proposal. 50 people attended the open house, held in November 2016. The majority of participants voiced support for the levee trail while several underlying landowners expressed opposition. Gauging this input, the City decided to proceed with asking underlying landowners to sign easement amendments voluntarily allowing public use of the levee.

The City hosted another open house meeting in December 2018 to connect local skateboarders with the skate park design consultant. 20 skateboarders attended and discussed desired park features with the designer, who also collected written input and contact information. A follow-up meeting was conducted in early 2019 to present the draft skate park design.

These related efforts to gather input on parks and recreation in the city contributed significantly to the 2020 Parks and Recreation Plan and will continue to inform the process as the plan is updated.

To generate additional input and discussion of priorities, a park tour was conducted on June 10, 2025 providing the opportunity for the new Board members to visit most of the parks and discuss ideas for the parks and park plan.

Input Received in Prior Years

The City strongly values citizen input and feels recent public input regarding park priorities should be considered along with input received during past plan development. Development of the 2012 comprehensive park plan involved surveys and public meetings conducted during 2011 and 2012. The Eastside Park master plan was revised in 2009 and 2012 with input gathered from Park Board and workshop meetings. And as noted, a survey was conducted in 2016 and the plan significantly revised in 2020. Many of the values and desires expressed then continue to be reflected in recent input, though some changes have occurred. Consideration of recent and past input serves to identify true and long-standing demand and need of the community for recreation.

Demand and Need Analysis

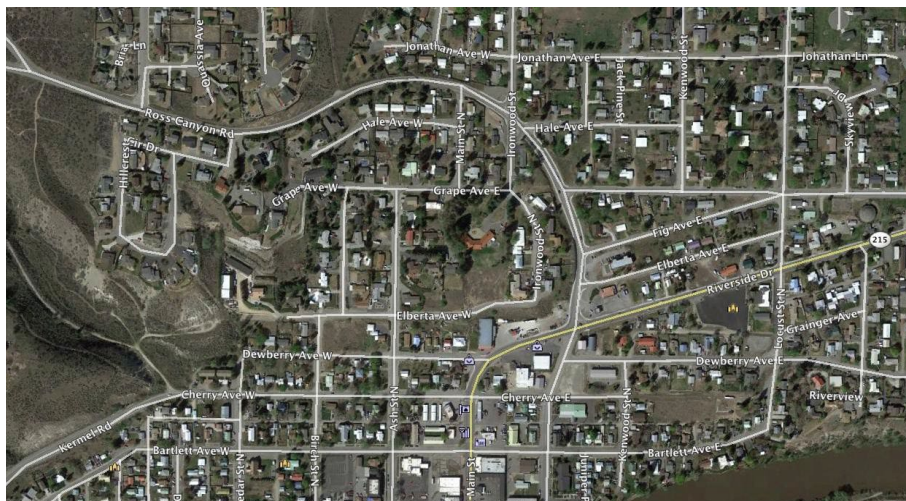
Given its importance, gauging of demand and need should be approached through several means. For this purpose, the City has relied on surveys and input received during public meetings, reviewed park use levels, considered Park Board input and utilized observations of City staff, civic leaders and citizens provided during a public parks tour.

Surveys and park use provide quantitative measures of demand to some extent. Several surveys and open house meetings have been conducted recently to gauge demand and support for existing or desired recreational features. These include the general park surveys distributed in 2018 and 2019, the

survey of landowners adjacent a segment of the river levee in 2016, and open house meetings regarding a new skatepark and the river levee trail. Two earlier surveys and assessments that are pertinent include the Okanogan County Outdoor Recreation Plan (2004), and Community Assessment completed by the Washington Rural Development Council.

Observation and ideas shared among City staff, civic leaders, and the Park Board provide important qualitative assessment of demand. Staff, who coordinate events and use or perform park maintenance, know a lot about the different parks, their use, and condition.

Using the measure of park acreage per person in the Planning Area, it would seem Omak offers a relatively high level of recreational opportunity for its population. However, this assessment should consider that a significant portion of the Eastside Park awaits redevelopment and two sizable open space properties have little to no recreational improvements. While most of Omak's recreation facilities are concentrated in the 76-acre Eastside Park, approximately 25% of the park area is available for redevelopment. Many of the City's other neighborhoods and developing areas lack significant parks or green space.



Many of the City's other neighborhoods and developing areas lack significant parks or green space.

Figure 25. Some Omak neighborhoods lack green space (imagery: Google Earth).

Surveys

Two assessments performed in the early 2000's surveyed people from the Planning Area and their results remain relevant. These are the Okanogan County Outdoor Recreation Plan (2004) and the Community Assessment completed by the Washington Rural Development Council (2005).

The Okanogan County Outdoor Recreation Plan resulted from nearly a year of public meetings, an on-line and handout survey and monthly meetings of the County's Paths and Trails Advisory Committee. The survey conducted as part of the planning effort found, "Recreational facilities are very important to those members of the community who responded to the 2003 Okanogan County Recreational Online Survey. Nearly 75% of respondents stated that parks, trails, and other recreational facilities were 'very important' to their families. Interestingly, a similar proportion of respondents (79%) believe that parks, trails, and recreational facilities were 'very important' contributor to the economy of Okanogan County."

The Demand/Needs Summary of the County's Plan notes:

"It is clear from public response that the citizens of Okanogan County and those that visit the County place a very high value on recreation, and have strong a desire for new and/or improved recreational facilities. Examples of the growth of recreation demand include the Methow Valley Sports Trails Association, which has seen a twenty to thirty percent increased growth in the use of the Methow Valley Trails System and a growing demand for similar trail systems in the Okanogan Valley (e.g. the conversion of the old railbed along the Similkameen River)."

The Washington Rural Development Council provided a resource team to assist Omak/Okanogan and surrounding area in evaluating the community's assets and liabilities and in developing suggestions for improving the environment, social, and economic future of the community (2005). The Cities of Okanogan and Omak requested a Resource Team/Community Assessment and named Edna Siniff as the local coordinator. The team conducted over 20 listening sessions, with over 400 local individuals, asking them to identify the major problems and challenges in their community, the major strengths and assets of the community, and projects desired in the future.

The Community Assessment confirmed that parks and recreation facilities and programs are an important part of the quality of life for area residents and noted that replacement of the Stampede Arena and an indoor pool were high community priorities. Since this survey, replacement of the arena has occurred.

In 2012, Okanogan County sponsored an online recreational survey to which 70 residents of Omak responded. The County analysis of results grouped together responses from Omak, Okanogan, Riverside and Conconully. Respondents from this mid-county area indicated demand for river/lake access, picnic areas, playgrounds and indoor pool. Popular recreational activities include pleasure driving, walking or hiking trails, fishing from shore and picnicking.

A survey was conducted in 2016 by the Paths and River Ways group, surveying neighbors of the river levee from Central Avenue to Aston Island. Half of landowners adjacent this segment of the levee were interviewed. Of those contacted 78% supported use of the levee as a public trail, 22% expressed concerns but were not opposed. Most accepted its long-time use by the public. Several owners indicated concerns about security. A majority disliked the amount of homeless use along the shoreline.

Omak Park surveys distributed by the City and Park Board in 2018 and 2019 gathered 74 responses. Although a limited number of people responded, the surveys provide valuable current information from citizens. Findings include:

- Most respondents indicated feeling moderately informed regarding parks.
- Most visited Omak parks 1 to 4 times per month or more.
- Nearly all visited Civic League and Eastside parks.
- Respondents indicated play equipment and Eastside Park's walking path and swimming pool are most used.
- Improvements most desired (in order of level of support) were trails, a water (splash) park, and indoor year/round pool. Table 5 shows the number of votes by priority for improvements suggested by respondents.
- Nearly every respondent indicated a pool is necessary and most wanted a year-round facility.
- Most supported new or additional financial methods to support Omak parks and recreation.
- Most indicated the parks need improvements to satisfy expectations.

Table 5. Number of votes for 1st, 2nd, and 3rd Highest Priorities by 2018-2019 and 2025 Park Survey Respondents

Feature	# 1 st Priority		# 2 nd Priority		# 3 rd Priority	
	2018-2019	2025	2018-2019	2025	2018-2019	2025
Trails/walkways	22		13		7	
Splash Park	12		1		2	
Indoor pool/pool improvements	10		5		2	
Play equipment	5		11		2	
Roller hockey rink	5		3			
Better security- homeless concerns	4		4		1	
Improved signage	3					
Ice rink	3		1		2	
Lighting	1		1		3	
River access	1		4			
Hockey box	1					
Recreational activity programs			4		5	
Maintenance			3		3	
Community center			3		2	
Rest rooms/drinking water			2		2	
Disk/Frisbee golf			1		4	
Natural areas			1		3	
Bike lanes			1		1	
Plant trees			1		1	
Dog parks			1			
Redevelop center of Eastside Park			1			
Tennis courts			1			
Stampede bleachers			1			
Seating			1			
Skatepark					2	
Additional sports fields					1	
Batting cages					1	
Homeless shelter					1	
Archery range					1	
Elderly facility/equipment					1	

Park Use Levels

The City doesn't keep user counts of park or park facility use except in a few instances, but prevailing use levels are noted by City staff, Council, and Park Board. The number of events held annually within each park provides another measure of use.

Certainly, Eastside Park receives the greatest use given the number of facilities it offers. The Omak Stampede weekend draws about 16,000 attendees each August. During 2.5 months of operation, about

12,000 people use the outdoor pool, primarily youth. Other events throughout the year include a truck and car shows, barrels club, junior and high school rodeos, Farmers Market, and several organized runs. Baseball and soccer fields receive school district, league, and pick-up use during three seasons. The campground and RV park has about 3,500 registrations annually. People are nearly always present using the exercise trail, skating in the new skate park, shooting hoops, playing tennis or pickleball.

The Civic League Park is much smaller but also heavily used, unfortunately, increasingly by homeless, and others that engage in open alcohol and drug use, public urination and defecation, and occasionally harass park users. As a result, the music performances using the bandshell, annual events such as Harvest Festival, Health Fair, Back to School night, Easter egg hunt, and various events occur in the park have been declining. Its size, recreation features, lawn, mature shade trees, and central location adjacent the library, City Hall, and other services one block from the center of downtown all serve to attract park use and is becoming a focus of law enforcement efforts.

Dalton-Klessig Park receives considerable use given its location near assisted living and health clinic facilities, apartments, and hotels. This part of the City is developing, so use of this park will only increase. More park green space in this area should accompany development as it occurs.

The Omak Pioneer Park receives light to moderate use and has been attracting homeless and others much the same a Civic League Park. Given its location downtown and riverside setting at the north end of the river levee, there is potential for much greater use. When a levee trail is developed on the levee west side of the river, the park would make a good trailhead at its northern endpoint. Utilization of this and other neighborhood parks and open spaces is likely to increase with improved law enforcement, information and signage provided by the City.

Although posted and officially closed, the river levee is walked and bicycled frequently. From spring to fall, boating and floating occurs on the river. With significant salmon, steelhead, and river restoration efforts underway, increasing demand and opportunity for fishing is anticipated in the future.

Open House Meetings and Tour

The City's open house meetings about a levee trail and new skatepark demonstrate the extent of support for both features.

- 50 people attended the levee open house in 2016, nearly all supporting creation of a trail on the levee.
- 20 skateboarders attended an open house in 2022 to discuss skatepark design features with the park designer.

On June 10, 2025, the City hosted a tour of its parks. Eight people participated and discussed park needs. Participants included City Planner, Kurt Danison, City Administrator Todd McDaniel, Public Works Director Wayne Beetchenow, Administrative Assistance John Marshall, and Park Board Members Pat Pruitt, Nikki Watts, Paul Nash, ----- and -----.

Park Board Recommendations

2025 Park Board recommendations include:

- Support for grant funding of Eastside Park improvements identified in the Parks Comp Plan and Eastside Park master plan, including realignment and construction of additional ball fields,

- moving and rebuilding the skate park to a higher standard, relocating portions of the walking trail, and constructing parking including parking for the disabled;
- Support for hiring a consultant to design/plan new skatepark to move forward with redevelopment of Eastside Park and quadplex;
- Endorsement of the hockey group volunteering the repairs subject to approval by Public Works of the sealant, and that they be allowed to use the court when not in use for tennis;
- Support for City to continue efforts to open levee trail (Board goal);
- Support for next steps to develop Old Landfill trail (Board goal);
- Vendor (for-profit) activity in the parks being authorized by the City as a special exception, or prohibited as stated in City ordinance, with appropriate fees assessed for the use.
- Development an assessment of the condition of the pool, itemizing necessary repairs and their cost, and anticipated repairs, cost and schedule;
- Support for painting lines on an existing concrete slab in Eastside Park and setup of portable fencing by users to enable pickleball use;
- Support for cleaning of tennis court surface cracks by hockey group followed by crack repairs conducted or contracted by the City;
- Support for approval of the proposed 2020 budget line for rebuilding Julia Maley Park;
- Supports for the name of “River Overlook Trail” and creation of a trailhead with sign at the old landfill property.
- The Board also discussed relocating the Buell Stevens Veterans Memorial within Eastside Park and felt this project needed involvement and leadership by veterans.

To arrive at the recommendations, the Board engaged in revision of the park plan, conducting a review and providing comment on the previous plan. Board members also reviewed other park plans for comparison. To obtain public input, the Board developed the Omak Parks survey using SurveyMonkey (2025) and compared to previous results.

Conclusion

Combining information collected through these various methods allows rating the community support and demand for certain recreation features and improvements. Improvements having the greatest demand include:

- Additional trails including a river trail;
- A year-round pool facility;
- Additional and improved play equipment;
- A splash park;
- Continued development and improvement of the Eastside Park guided by its master plan;
- Additional points of access to the river;
- A roller rink and pickleball courts;
- Improved and additional restroom facilities;
- Improved signage identifying parks, trails, and water access points;
- Additional lighting;
- A community center.

Recreation-related services desired include improved policing and security, provision of recreation programs, and improved pedestrian and bike lane access to parks and through town. Both the Omak Parks and Paths and River Ways surveys indicate concerns about the increasing presence of homeless

people within parks and along the river levee.

Action Plan

This action plan identifies actions the City will take to manage and improve its parks and open spaces during the next six years. Actions will focus on priorities identified in the Demand and Need Analysis section considered to provide the greatest value to the most people, at costs the City can afford, while maintaining all parks in excellent condition.

The City spends about 15% of all non-dedicated revenues on culture and recreation. Park funding must compete with public safety (fire protection, law enforcement) and other needs. Figure 22 shows the allocation of general funds among the various categories.

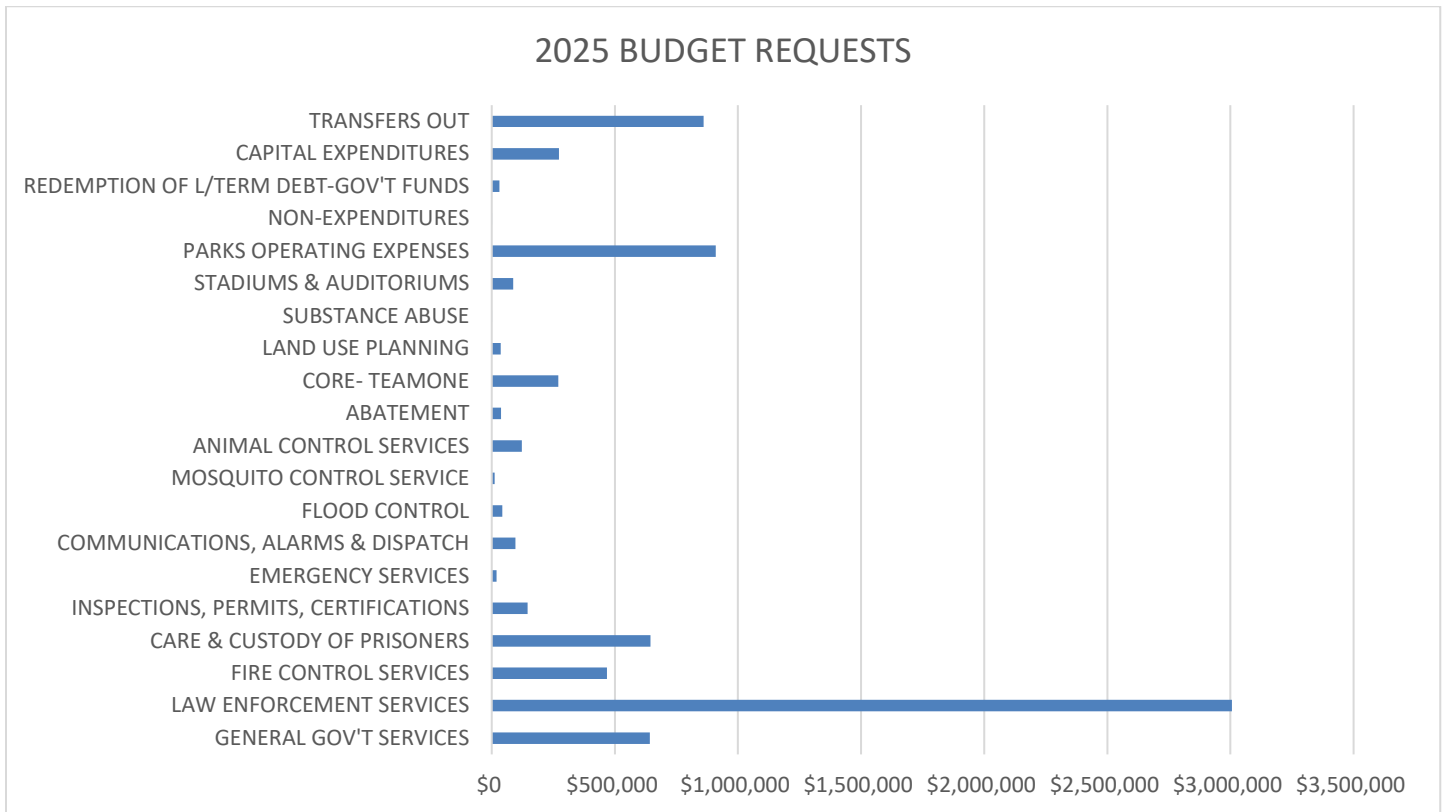


Figure 26. Allocation of general funding expenditures – 2025 Budget Requests.

City expenditures for park facilities have been increasing and the total amount budgeted in 2025 was about \$909,800. These *Current Expense* expenditures cover basic maintenance and operations, limiting what improvements or new facilities can be provided without external funding or other support. The top priority each year is maintenance of the existing park infrastructure. Maintenance includes park cleanup of trash or vandalism, repairs, mowing, watering, and weed control. Operation of the parks requires financial administration, management of staff, responding to the public, RV park registration, operating the pool, reservations to use picnic shelters, coordination of use of playing fields, and coordination of events such as the Stampede.

Actions called out in the Action Plan are based on City revenue estimates and plans for grant funding applications. They fall into two categories, *Current Expense* actions and *Capital Improvement* actions.

The first category, *Current Expense*, includes improvements or other actions that the City believes can be accomplished keeping within its current expense budget. This budget is set annually by the Council. The amount budgeted depends on estimates of non-dedicated revenues the City will receive.

The second category of actions is *Capital Improvements*. These cost more and depend on additional outside funding such as grants. Grant funding is typically competitive, meaning the City’s applications compete with others based on scoring criteria set by funding agencies. An important consideration in pursuing additional park improvements is the subsequent cost of maintenance and operations. Some improvements desired by Planning Area residents cost more to operate and maintain than the City can currently afford, so are not identified as actions for this planning period.

Potential exists to accomplish more through additional collaboration and support from others such as the Tribes, other agencies, the Park Board, the Tree Board, civic organizations, and volunteers.

Current Expense Actions

Current expense actions are listed in Table 7. The table provides a work schedule, listing actions by the calendar year(s) in which they are planned.

Table 7. Current Expense Actions by Year.

Year Action Will Occur	Action	Cost
2026		
	Develop standard template for Omak Park signs	\$ 3,000
	Install signs as needed to identify all parks, water access	\$ 4,000
	Begin neighbor outreach, hardscape and planting designs for Patterson, Johnny’s Parks	\$ 4,000
	Continue fill/regrading in central area of Eastside Park (ongoing 2026-2031)	\$ 1,500
	Acquire levee easements for river trail (Pioneer Park to Aston Island)	\$10,000
2027	Complete hardscape and planting designs for Patterson, Johnny’s Parks	\$ 1,500
	Initiate levee trail use between Central Avenue and Aston Island where easements allow public use	\$ 2,000
	Begin development of City-wide River Trail and Access Plan	\$10,000
	Continue acquiring levee easements for river trail	\$ 5,000
2028	Complete development of River Trail and Access Plan	\$ 5,000
	Apply for river trail/access grant funding	\$ 5,000
	Install hardscape and plants at Patterson Park	\$ 8,000
	Plant shade trees at Civic League, Oak Street Parks	\$ 2,000
	Continue acquiring levee easements for river trail	\$ 5,000
	Open additional segments of levee where easements allow public use	\$ 500
	Plant shade trees at Civic League, Oak Street Parks	\$ 2,000
2029	Install hardscape and plants at Johnny’s Park	\$ 8,000
	Open additional segments of levee where easements allow public use	\$ 500
	Begin work on trail and water access improvements guided by River Trail and Access Plan	\$ 2,000
	Develop design for Koala Parcel and connecting trail to Dalton-Klessig Park	\$ 5,000
2030	Plant shade trees at Eastside Park	\$ 2,000
	Begin improvement of Koala Parcel	\$ 8,000
	Apply for river trail/access grant funding	\$ 6,000
	Open additional segments of levee where easements allow public use	\$ 1,000
	Work to develop trail and water access improvements guided by River Trail and Access Plan	\$10,000
2031	Continue improvements at Koala Parcel	\$10,000
	Work to develop trail and water access improvements guided by River Trail and Access Plan	\$10,000

Open additional segments of levee where easements allow public use

\$ 1,000

The Action Plan calls out application for grant funding of capital improvements. Actual installation of capital improvements will depend upon successful award of grant funding. Should the City succeed in winning grant awards, the Public Works Department will administer the grants, oversee contractors, and may perform some of the work in-house.

Successful implementation of the Action Plan will require involvement by the public. Park Board and Tree Board members will play a key role in advising parks planning and design, play equipment assessment and selection, park tree and plant selection, performing outreach, writing park updates for the newsletter, researching new concepts in parks, and searching for additional funding. Support and involvement by businesses, civic organizations, and schools will contribute to successful implementation of this plan. Figure 27 provides an example of trail enthusiasts cleaning the levee and river shoreline.



Figure 27. Volunteers pitch in to clean up river levee and shoreline.

Capital Improvement Program

The Capital Improvement Program (CIP) identifies more expensive projects the City aims to fund and carry out. Funding is typically derived from grants or other external sources though more expensive *Current Expense* projects are also listed in this section. The CIP is consistent with the City’s 2011 Capital Facilities Plan (CFP), the most current City capital budgeting document that includes capital expenditures for parks. Applications for grants developed in-house are not considered projects but are listed in Table 7 to assure they are scheduled and performed on time.

The CIP is the heavy lifter in accomplishing major park improvements. It is important that the projects identified and funded directly address the parks and recreation goals identified in this plan. Each capital project addresses one or more goals from the Goals and Objectives section of the plan. Table 8 lists projects with associated goals, estimated cost, match requirement if grant funded, and funding source for each year of the planning period.

“Match” signifies the City’s contribution to a project. Most grants require a match demonstrating local commitment to the project and to spread money from the grant program to a greater number of projects. Often the match requirement is 50% of the overall project cost. Areas within Omak are identified by the RCO as underserved populations or communities in need. Grants awarded in those areas have reduced match requirements.

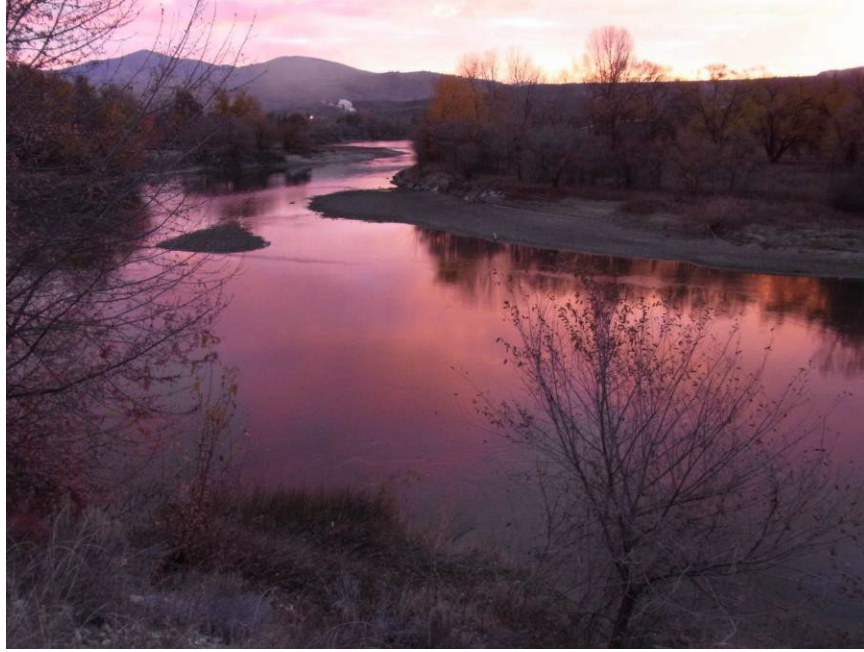
Capital improvement projects identified for this planning period emphasize continued Eastside Park investments (skatepark, tennis court renovation, pool assessment and veterans memorial relocation) in keeping with the park master plan. In 2018, the City contracted design of a new skatepark by a professional skatepark design/build company and has obtained a design and specifications for a new park. A second emphasis is improving river access and trails. The community has voiced strong support for trails, especially a river trail, and trails are important health and economic improvement drivers (2019). Trail-based activities have been shown to improve physical and mental health. A third emphasis is replacing or installing new play equipment at up to five parks (Julia Maley, Civic League, Eastside, Oak Street and Dalton-Klessig).

Table 8. Capital Improvement Plan - Parks

Year	Capital Project/Goal	Estimated Total Cost (est. 2026 dollars)	City Match	Funding Source
------	----------------------	---	------------	----------------

Final Note

Carrying out the actions identified in this Action Plan will result in significant, visible improvements to Omak parks. The plan is ambitious but feasible both operationally and financially. The City feels it best serves the community’s recreation goals, demand, and need during the next six years and beyond.



Okanogan River sunrise at Shellrock Point

References

2004. Okanogan County. Okanogan County Outdoor Recreation Plan.
2005. City of Omak. Comprehensive Plan.
2005. Rural Development Council. Omak/Okanogan Community Assessment.
2011. City of Omak. Omak Eastside Park Master Plan.
2012. Okanogan County. Online Recreation Survey.
2016. Paths and River Ways Group. Omak River Levee Neighbor Survey.
2019. Omak Park Board. Omak Parks Survey
2019. EcoNorthwest. Economic, Environmental and Social Benefits of Recreational Trails in Washington State.
2019. Washington State Recreation and Conservation Office. Economic and Health Benefits of Walking, Hiking and Bicycling on Recreational Trails in Washington State.

City Adoption of Plan

